

Celebrating A Decade of PROGRESS 1958 -1968

Building for today...



Sketch of Buffalo Grove's proposed new Municipal Building which will rise soon in Emmerich Park area to meet needs of this fast growing community.

A Spirited Community of Friendly Neighbors.

and
building
for
tomorrow



Aerial view of the new Strathmore subdivision which is beginning to take shape in the Lake County section of Buffalo Grove. [Photo by Bob Shimer]

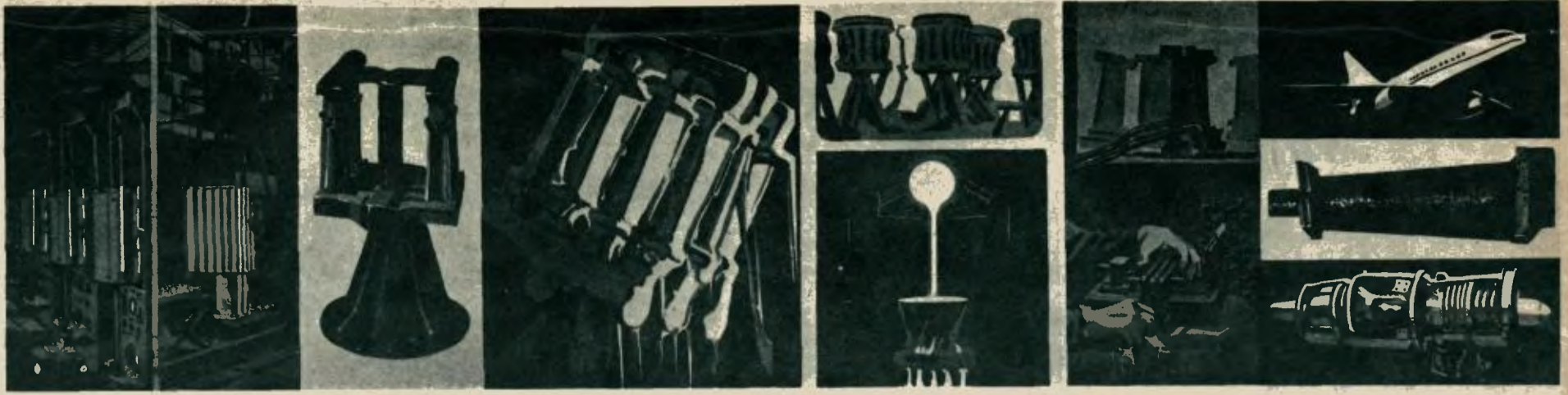
Village of



Buffalo Grove,

*Biggest
Fun Day
of the
Year"*

SUNDAY, September 1, 1968
At THE 7th ANNUAL
**"BUFFALO
GROVE DAY"**



MARTIN METALS

division of **MARTIN MARIETTA CORPORATION**

HAS JOB OPPORTUNITIES FOR YOU

PRODUCTION

Assembly, Machine Operation, Casting, Finishing, Inspection, Supervision

CRAFTS

Tool Making, Machining, Electrical, Welding, Maintenance

OFFICE

Typing, Key punch, Secretarial

ENGINEERING

Metallurgy, Chemistry, Production, Mechanics

ADMINISTRATIVE

Accounting, Sales, Data Processing, Personnel

Martin Metals opened a small Wheeling plant in May, 1957, to conceive, develop, and produce super alloys and vacuum melt investment castings for the jet turbine engine industry.

Martin Metals is still growing and employs over 350 people today. The company is a leader in the alloy and casting industry producing metals & parts for aviation's most advanced jet aircraft engines.

Martin Metals is one of the largest employers in Wheeling. It is a division in the Aerospace Group of Martin Marietta Corporation. Other major plants of the Group are located in Baltimore, Md., Orlando, Fla., and Denver, Colo.

Plan your career with Martin Metals in mind. Good pay and excellent fringe benefits. An Equal Opportunity Employer.

**250 N. 12th Street
(off Dundee Road)**

**Wheeling
537-2180**



Martin Metals Noted for Superalloys

Martin Metals was formed on April 18, 1957 as Sierra Metals by the American Marietta Corp.; it was renamed Martin Metals after the merger of Martin Company and American Marietta Corp. Martin Metals' modern executive offices and plant facilities are located at 250 N. 12th Street, Wheeling.

Martin's progressive leadership is reflected in its growing business activities - it is in the process of growing from a small organization geared mainly to research and development, to a full blown production facility which will employ over 400 people. Martin is offering challenging job opportunities of an expanding organization accompanied by comprehensive company benefits, such as group insurance, paid vacations, paid holidays, automatic increases, etc.

Martin Metals is engaged in the development and production of proprietary and commercial high temperature superalloys and production of vacuum precision castings of these alloys. Its major market is in the rapidly expanding gas turbine industry.

Martin Metals has been noted for its work in the development of advanced vacuum-alloyed nickel and cobalt base metals. A production foundry was added to this strong metallurgical background to provide a strong capability in the vacuum precision business.

Its casting experience to date has centered on the development and production of advanced air cooled vanes and blades for the hot section of jet aircraft turbines. The aircraft gas turbine consists of the air compressor, followed by burner cans which force hot gases at very high temperatures and velocities through the turbine section where Martin's castings and alloys are located.

These parts are referred to as vanes and blades - the stationary vanes directing the gases against the rotating blades. The blades are held in a rotating wheel that extracts power from the hot gases.

An exclusively patented technique, known as the Sierra Process, provides the gas turbine industry with a higher quality product. Parts cast by this process have improved surface finish, internal soundness and controlled grain size. Internally vented blades and vanes and integral cast wheels typify Martin Metals' ability to produce the intricate castings desired by jet engine designers.

Great effort went into the development of production casting techniques, but Martin Metals also has been able to maintain its pioneering role in alloy development. It recently introduced a new cobalt base alloy, a higher strength nickel base alloy, and a nickel base alloy that resists sulfidation corrosion.

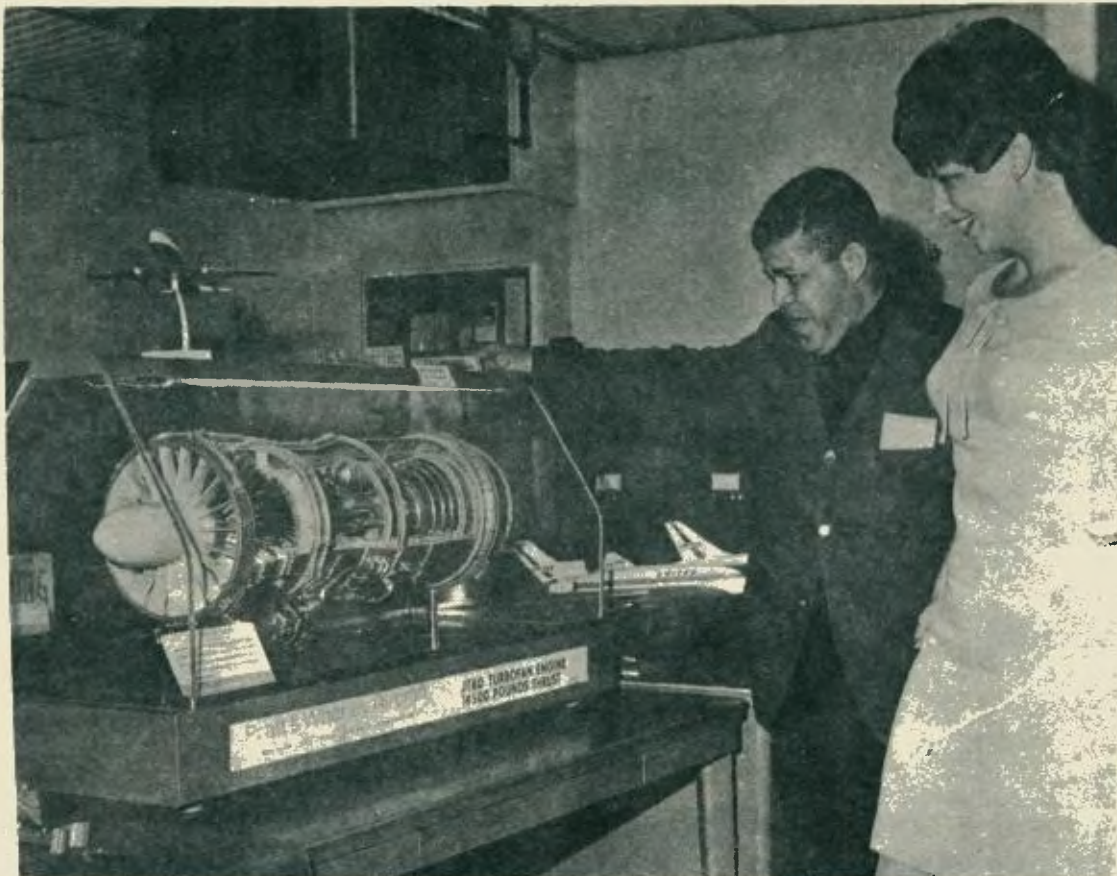
Martin Metals has put ten completely new superalloys on the market in the past ten years, according to Mr. J. H. Cadieux, vice-president and general manager. These alloys have been cast in a variety of blades, vanes, and integrally cast wheels and nozzles.

"Our products are in the gas turbine engines of many advanced airplanes, helicopters, trucks, ships, and industrial power plants," Mr. Cadieux said. "and we are continually seeking new areas of superalloy use." "We anticipate that some of our alloys will go into the advanced high-speed missiles of tomorrow," he added.

Martin Metals products are used in gas turbine engines which are the power plants for well known jet aircraft. Among them are the Boeing 707, 720, 727, 737, and the forthcoming jumbo jet, the 747; McDonnell-Douglas jets such as the McDonnell Phantom F-4; the well publicized F-111 of General Dynamics; and the new military transport, the largest plane ever built, Lockheeds' C-5A.

Martin Metals' management employs the latest techniques for production control and quality assurance. Data processing equipment is used to ensure prompt deliveries, and back-up facilities for producing ceramic and glass cores permit a rapid increase in the production capacity.

Modern quality control equipment is being used to maintain quality levels commensurate with the latest airfoil specifications. In addition to dimensional and visual inspection control, sensitive Zyglo and X-ray facilities are available.



John Anderson and Beth Woulds examine model of jet engine containing Martin Metal's precision produced parts & alloys.



Neal Wise, Director of Industrial Relations welcoming Village Mayor Ted Scanlon of Wheeling and family to open house at the company plant in Wheeling

Open House Attracts 500 Visitors, Guests

Martin Metals celebrated its 10th Anniversary on May 11 by opening its doors to visitors and guests.

Guided tours were conducted for over 550 during the 5 hour open house. Each department set up displays and exhibits of their function in the making of superalloys and investment castings for the turbine engine industry.

The open house was visited by Wheeling Mayor Ted Scanlon and family, Chamber of Commerce chairman Ken Kopper and several other prominent local business and professional men.

Major Contract Won

Martin Metals has been awarded a contract to produce important vacuum cast parts for the TF-39.

The TF-39 engine, rated at 41,000 lbs. thrust, powers the Lockheed C-5, the world's largest military transport.

Total value of the contract awarded to Martin Metals could exceed \$3 million if options are successfully negotiated, according to Mr. Cadieux, general manager.

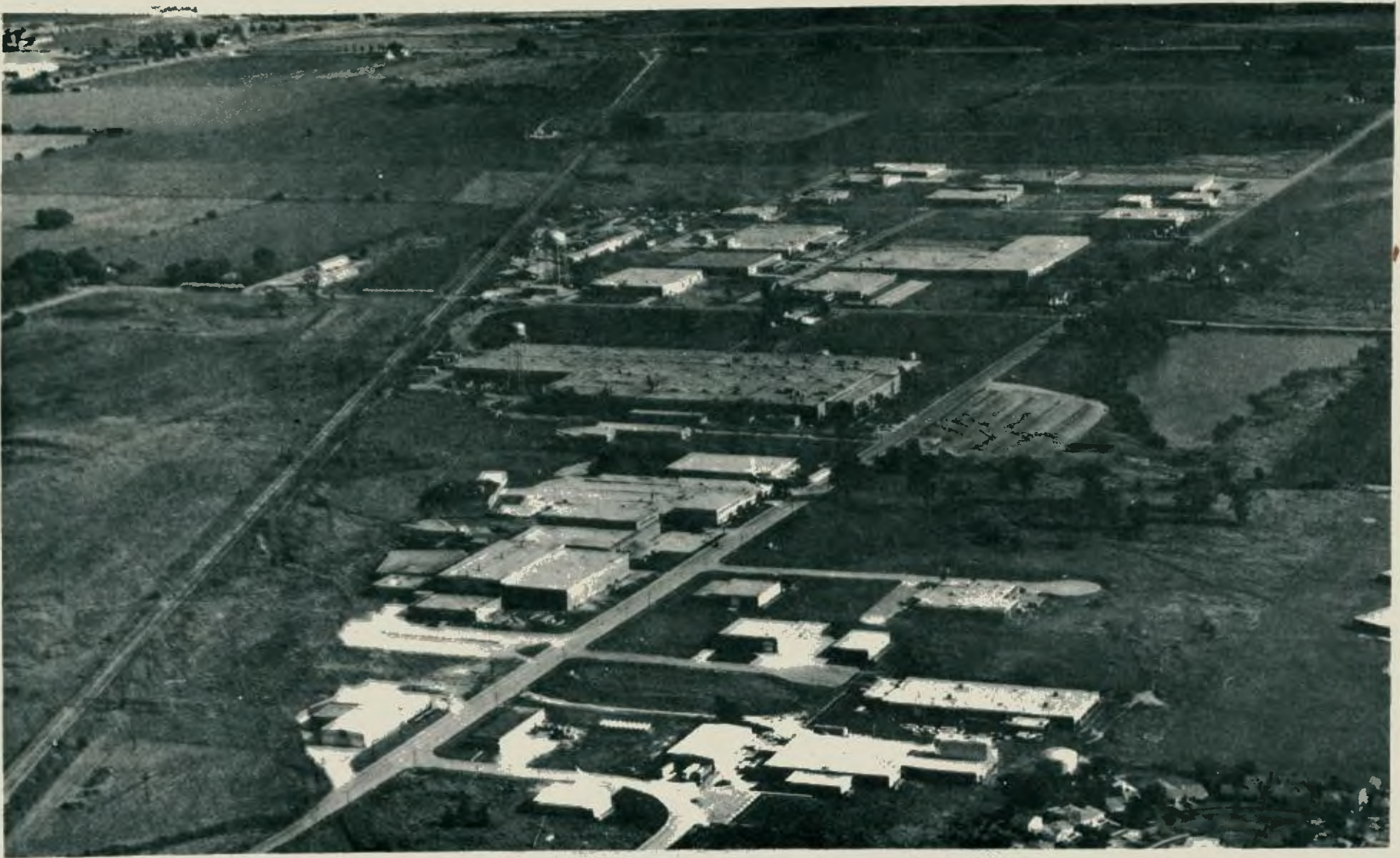
Production of TF-39 tooling is now in progress and casting deliveries beginning in 1969 will span a two year period.

"This contract brings into play all of our integrated facilities - research and development, alloy production, ceramic core production, vacuum melting, and chemical and metallurgical testing - evidence of Martin Metals total capability service to the gas turbine industry," Mr. Cadieux said.

The parts to be manufactured are all vacuum cast, high temperature nickel-base superalloy airfoils. They will be installed in the hot section of the TF-39 turbine where temperatures as high as 2100 F are encountered during service. Martin Metals' alloy production facility will supply the superalloy raw material used in the castings.



Mr. J. H. Cadieux, Vice-President and General Manager who has been with Martin Metals for 2½ years.



Aerial view of the fast growing Wheeling Industrial District looking south from Dundee road along the Soo Railroad Tracks. Body of water at right of picture is Ekco Lake, part of the expanding complex of Ekco Products whose building dominates the area at this time. Slightly to the left of center at the top of the picture is the new Skil Tool building which is rapidly nearing completion along Wolf Road. Main road in the illustration is Wheeling Road which crosses Hintz road at Ekco Lake.

[Photo by Bob Shimer]

To Give You
Better Service

WE HAVE MOVED

TO

25 So. Milwaukee Avenue
Across From The Wheeling Public Library

For All Of Your
INSURANCE NEEDS
Contact
KEN KOPPER



Find Out How Much You Save!

537-4700

just south of Dundee Rd.

Executive Secretary Wheeling Chamber of Commerce

WHEELING

3 Bedroom RAised Ranch with vinyl siding, 1½ car att. garage. Living room & dining "L" - 1½ baths, full basement with 15x23 family room plus utility room. New F.A. Gas furnace. Incl. gas range, Ref. washer, dryer, water softner, carpeting & drapes.

\$29,500



WHEELING

3 Bedroom Brick & Frame Ranch - 1 car attached garage, full basement, 1½ baths, kitchen, built-in cabinets, stainless steel sink, elec. o. & r. Carpeting in L.R. & 2 B.R. Cramer tile in full bath. 16x18 concrete patio - 17 trees.

\$25,900

WHEELING

3 Bedroom Ranch w/carport, 55x120 lot, newly decorated inside and out; new carpeting in L.R., Hall & Master B.R. Ceramic tile entry with planter, ceramic wall tile in kitchen and F. A. Gas Heat.

\$21,900



Shadle - Sauter & Assoc.

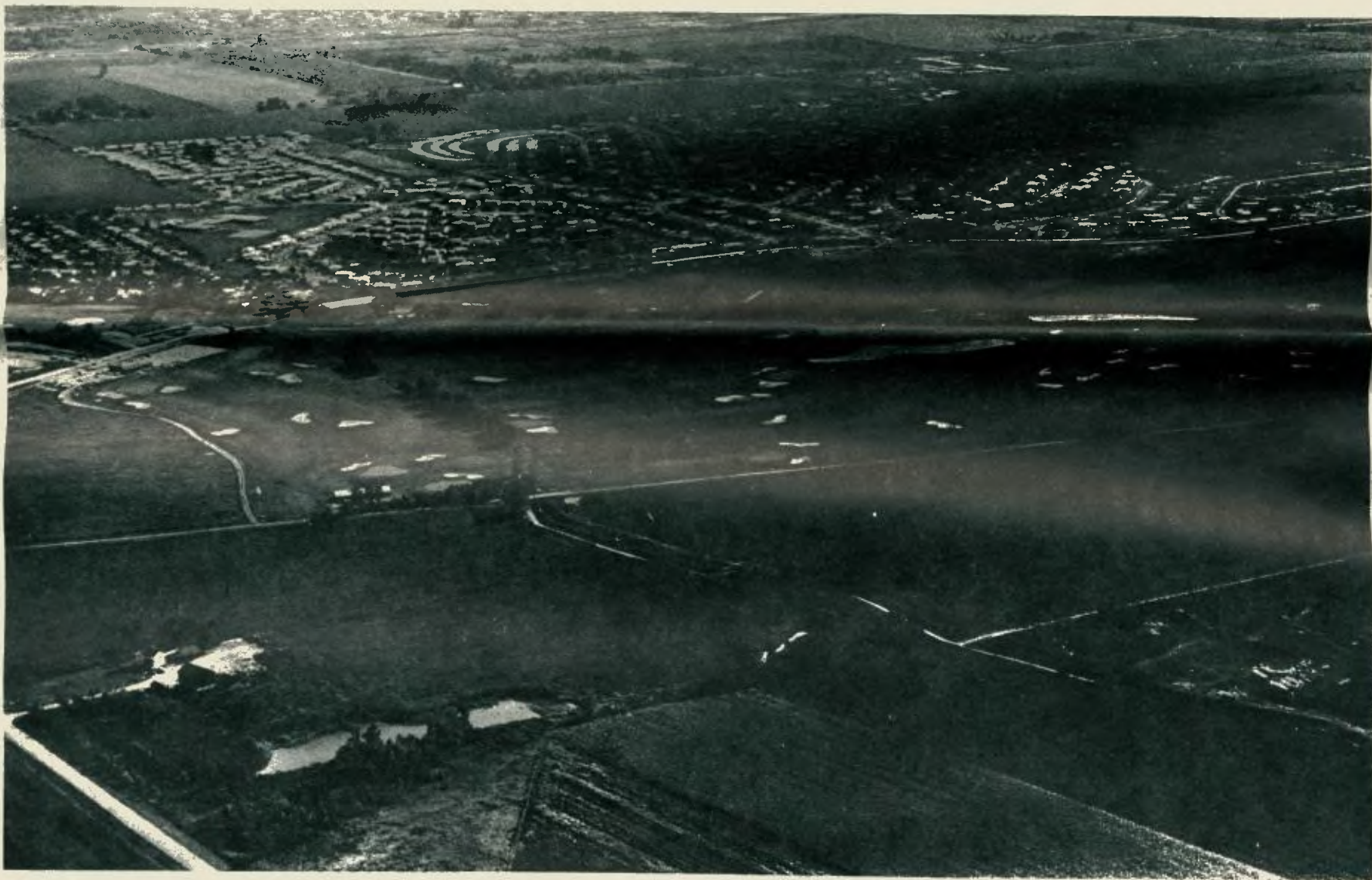
REAL ESTATE 170 E. Dundee 537-8880

GOLFERS!

HERE'S HAPPY NEWS

*Announcing The Opening of Chicagoland's Newest
Daily Fee Golf Course*

BUFFALO GROVE GOLF CLUB In Buffalo Grove (near northwest Wheeling)



Everything To Make The Fairway Warrior Happy

- 18 Holes Of Golfing Pleasure
- Watered Fairways Of Variety and Interest
- Two Creeks, Three Small Lakes
- Big Greens, Tailored For Accuracy
- New Clubhouse With Restaurant and Bar

Play This Fine Course- You'll Agree

BUFFALO GROVE

Is Northwest's Number One

For Daily Fee



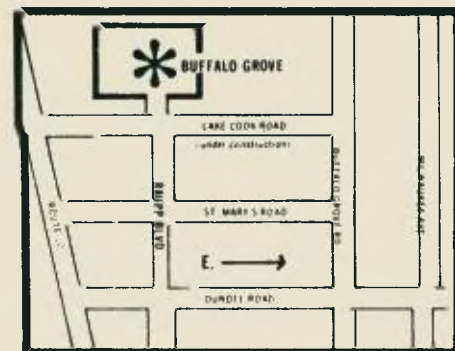
Managed By



BUFFALO GROVE GOLF CLUB

RAUPP BLVD.

at LAKE COOK RD.





THE ILLINOIS LOCK CO.....

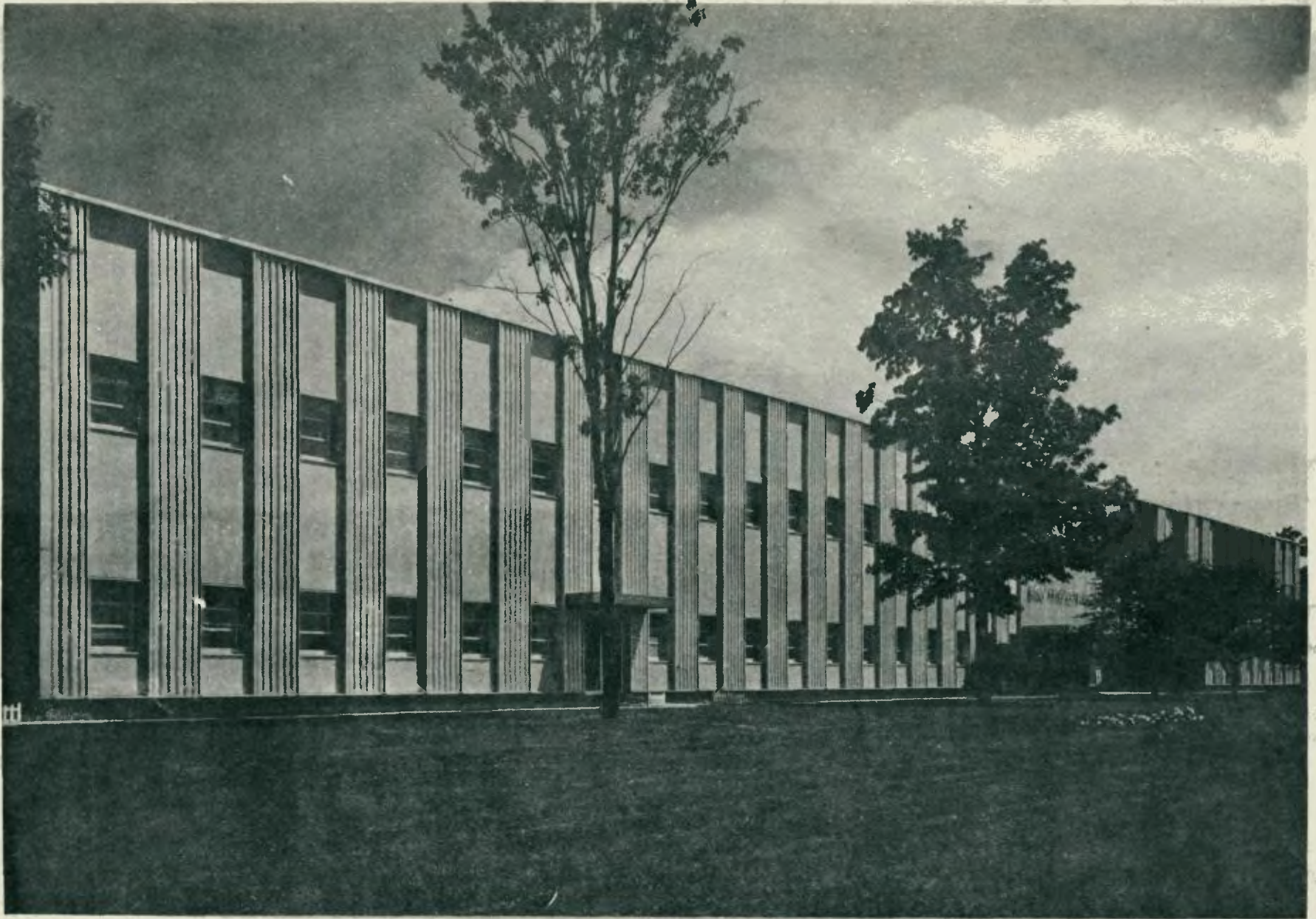
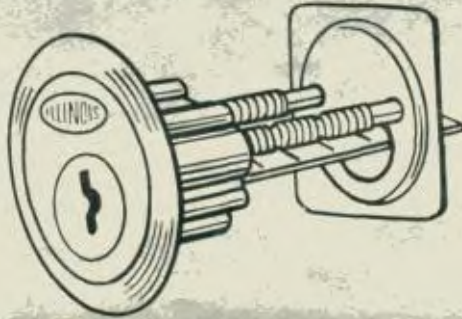
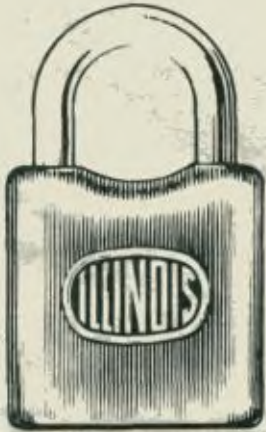
WHERE SECURITY HAS MORE THAN ONE MEANING

For many years, The Illinois Lock Company has had an excellent reputation for the manufacture of locks. The patented mechanisms of these locks are used in Rim and Mortise locks for the home, for cabinet locks, desk and drawer locks, locks for file cabinets and laboratory, furniture, padlocks and other special applications.

The famous Illinois "Duo" lock mechanism is reputed to be as close to a pickproof lock as any sold today. That's why lock users look to The Illinois Lock Company when they want Security.

There's another type of security at Illinois. Employees find this is a great place to work in a friendly atmosphere, with neat and clean surroundings. Many of our employees are in the 10, 15, or 20 year category of employment. Vacations, Hospitalization insurance and many broad coverage benefits make The Illinois Lock Company a better place to work. This may be the Security you're looking for.

THE ILLINOIS LOCK COMPANY
A SUBSIDIARY OF THE EASTERN COMPANY
315 W. HINTZ RD., WHEELING, ILLINOIS



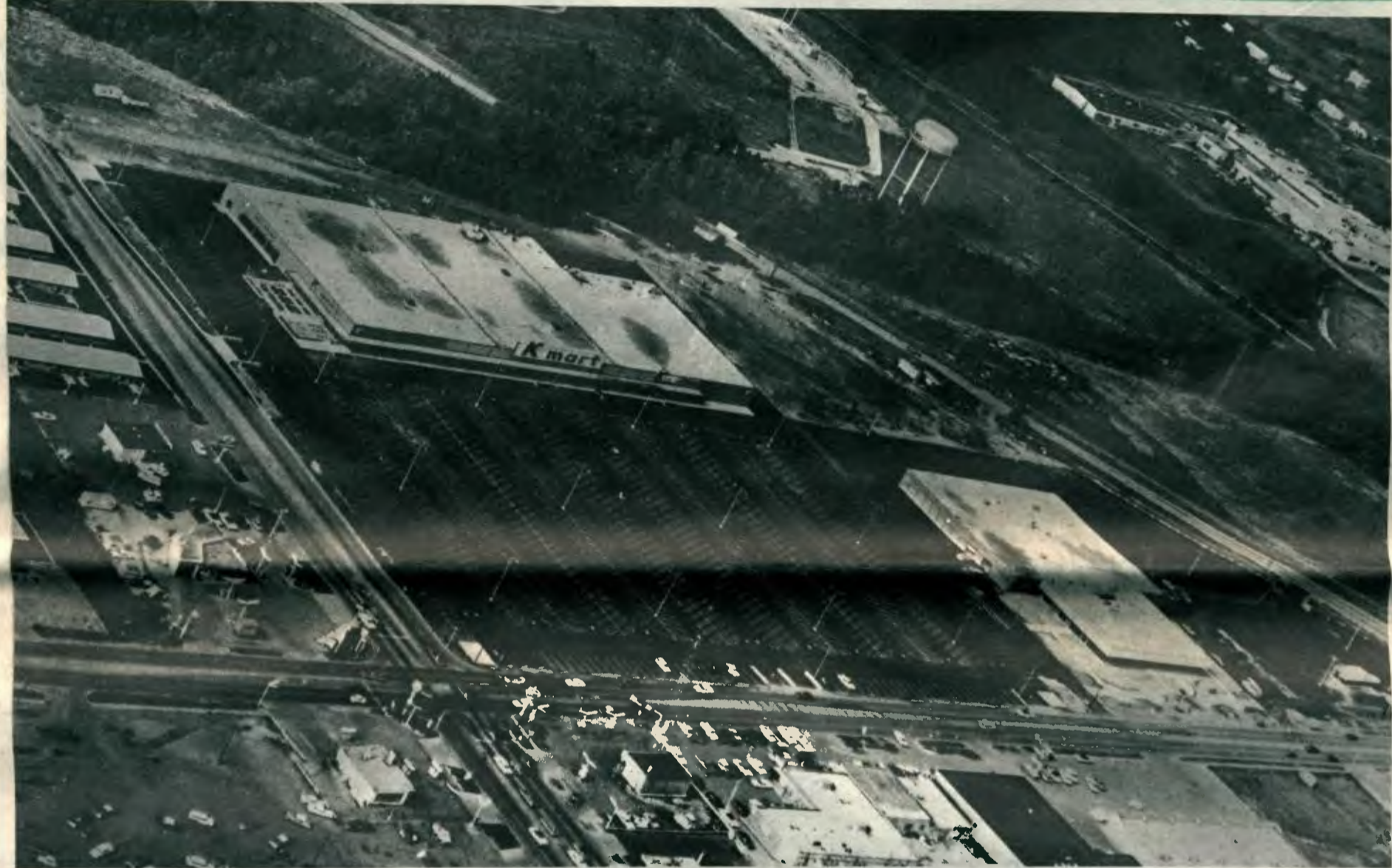
EKCO PRODUCTS—WHERE IDEAS IN FOIL ARE HAPPENING



EKCO PRODUCTS, INC.
777 Wheeling Road, Wheeling, Illinois 60090



IS COMING TO WHEELING



WATCH FOR OUR GRAND OPENING

**YOU WON'T NEED CASH AT
K MART IF YOU APPLY
FOR CREDIT NOW. SAVE ON**

- | | | |
|---------------------|--------------|------------------|
| Lamps & Shades | Toys, Games | Housewares |
| Cameras & Supplies | Pet Supplies | Kitchenware |
| Sporting Goods | Horticulture | Gloves |
| Automotive Services | Tobacco | Hosiery |
| Domestics | Cigarettes | Footwear |
| Auto Accessories | Party Goods | Lingerie |
| Pictures, Frames | Rugs | Luggage |
| Home Furnishings | Records | Jewelry |
| Electric Appliances | Books | Handbags |
| Gift Wrap, Ribbon | Paint | Men's Apparel |
| Candy, Cookies | Hardware | Teens' Apparel |
| Greeting Cards | Furniture | Infants' Apparel |
| Toiletries | Dinnerware | Women's Wear |
| Millinery | Glassware | Stationery |

YOUR CREDIT CARD WILL ALSO BE GOOD AT KRESGES

Low Discount Prices Everyday

Discount Prices on National Brand
MERCHANDISE

Easy **CHARGE IT PLAN**

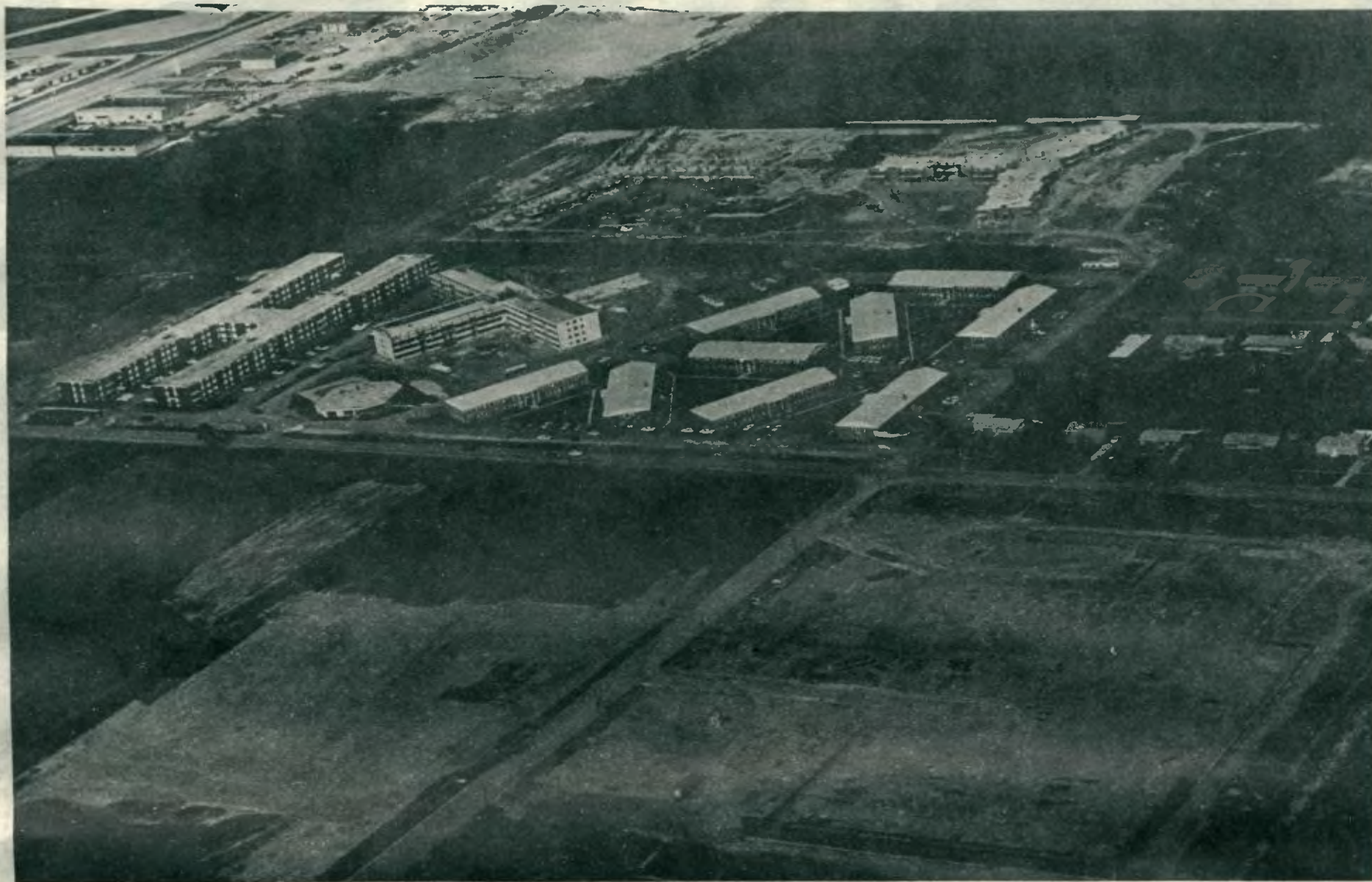
OPEN DAILY 10 to 10 Sunday 11 to 6

Your Satisfaction Guaranteed or
Your Money Cheerfully Refunded

Shop and Save at Your
Brand New K Mart Opening Soon

ROUTE 83 and DUNDEE ROAD , in WHEELING, III.

A VIEW FROM THE SKY



Lamplighter Apartments newest unit nears completion - all along Wolf Road there is feverish construction activity. In the foreground work is being rushed on the new AllState complex and sites for other new plants yet to come.

[Photo by



Buffalo Grove Apartments are already being occupied and Strathmore subdivision in the background is selling their new homes as fast as they can build them. Take a good look at the farmlands about the area - they may disappear before your eyes.

OF OUR GROWING AREA



BY-PASS 53 inches across Dundee road on its way to connecting with Tollway to Wisconsin as roadbuilders race to keep pace with the growing transportation needs of the area.

Shimer]



Remodeling treatment is applied to intersection of Milwaukee Avenue and Dundee Road as efforts are made to smooth the flow of traffic in this busy and growing section.

**FOR 'THE
WISE MOVE'...**

**Let The Reminder
print your job!**

- *Creative Art
- *Expert Copy Preparation
- *Fast, Efficient Service



**CALL THE ACTION
NUMBER**

537-7750

**ACTION
WANT ADS-**
the only way to
BUY, SELL, RENT!



Renting, hiring, selling or swapping?
Want Ads are the answer. In no time at all you'll
experience the result-power of a Want Ad. In
our paper, Want Ads reach people of many ages
and needs. Place your ad today. Call **537-7750**
We're here to help you write your ad!

**ADVERTISING
GETS RESULTS
BECAUSE IT
GOES BY MAIL**



For the Finest in Golf, Play at

18
HOLES
*
ROLLING
GREEN



COCKTAIL
LOUNGE
*
DINING ROOM
. Breakfast . Lunch . Dinner

**** IS NOW OPEN TO THE PUBLIC ****



**OPEN TO
THE PUBLIC**



For
Reservations
or
Information

PHONE
537-2240

**OPEN TO
THE PUBLIC**



LOCATED AT DUNDEE & BUFFALO GROVE ROADS - 1 MILE WEST OF ROUTE 83

SALLY'S FLYING SCHOOL

PALWAUKEE AIRPORT, WHEELING



[Photo by Bob Shimer]

**BUYING
OR
SELLING**
YOUR HOME

FOR THE BEST RESULTS
CONTACT


**WHEELING
REALTY**

37 South Milwaukee Ave.
WHEELING, ILLINOIS

537-1606
537-4907

Insurance & Mortgages
NOTARY REPUBLIC

Borchardt's
Family Style
*Dining Room &
Cocktail Lounge*



"Wives who cook and do the dishes
should be granted these three wishes:
A grateful mate ... A well kissed cheek ...
A restaurant dinner every week."

269 SOUTH MILWAUKEE
WHEELING
537-9781

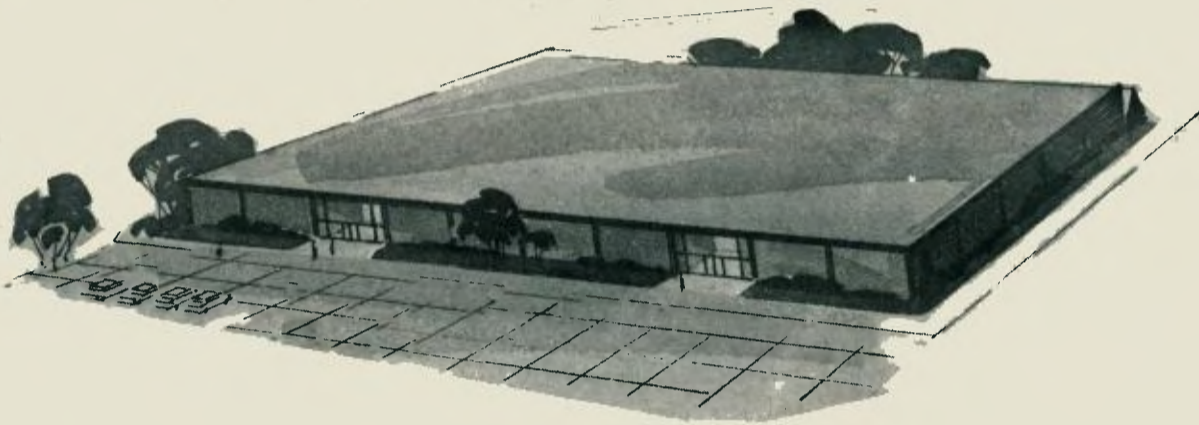
OPPORTUNITY NOW

You can enjoy these advantages while working for one of the world's leading power tool manufacturers:

Work close to home ...

Receive the full SKIL benefit package ...

Train while you earn ... Work in an ultra modern, air conditioned plant!



We're ready to staff an entire plant. You can be among the first employees to sign up at our new Wheeling facility. We have openings on both the day and night shifts. Positions are now open for:

PACKERS

PLATERS

ASSEMBLERS

SHIPPING AND RECEIVING PEOPLE

DEBURRING MACHINE OPERATORS

BORING MACHINE OPERATORS

PUNCH PRESS OPERATORS

See or call Mr. Jack Heinz today at:

SKIL

1444 Wolf Road (at Palatine)

Wheeling, Illinois

537-6545

537-9137

L.B. ANDERSEN & Co., Inc. REALTORS



Established *1921*
20 W. DUNDEE ROAD WHEELING, ILLINOIS

LE 7-4300
Chicago Phone, RO 4-9400

*Let Us Serve You..
To Buy or Sell*

- **Your Home**
- **Your Acreage** - Residential
- Commercial
- Industrial
- **Estates** - Throughout the
Northwest Area
- **Farms** - Northern Illinois & Southern
Wisconsin

MEMBER of M.A.P.
Multiple Listing Service



HISTORY:

L. B. Andersen came to Wheeling in 1921. It was a little town of 300, hardly a community, but due to his farm background and some knowledge of the cattle business, it was ideal for him. He had decided, before he opened his office at Milwaukee Avenue and Dundee Road in a little frame building which he erected, that his future and the future of the area was intimately tied to the land ... to the farms which he knew so well. He felt then, and times have proved him right, that a growing city with a good family environment could be built out in Wheeling.

During the hectic twenties when the Insull empire was being built, Wheeling and the Chicago periphery felt the first impact. Towns like Arlington Heights, Palatine, Des Plaines, Glenview, yes, and even Wheeling, among others, felt the impinging fingers of progress. And, as the roads came, the cities grew, and with it grew L.B. Andersen. And with the fabulous city-growth came increased values for once ordinary farm-land. He wisely kept his counsel, knowing that eventually the farms would make fine sub-divisions for city dweller seeking the suburban life.

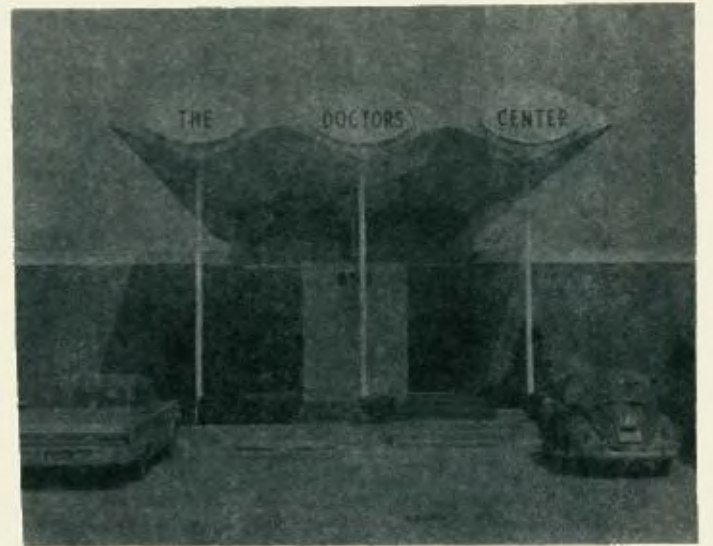
Moving into his own building in 1968, L.B. Andersen has seen all that he dreamed about as a young man come to fruition ... and he has been instrumental in helping buy and sell that land that, as a young man, he knew would be worth much more in years to come.

Why choose L. B. Andersen?

Today, more than ever before, a man must buy or sell his property at better than a fair market value in order to protect his interests. It is not enough to dispose of that property to the first buyer and trade it off for what may become an ordinary deal. He needs certain qualities that make it to his advantage to do business with any tight fisted buyer and to make sure that his deal is solid. That's where L.B. Andersen comes in. Not for the commissions, not for the revenue involved, rather, to protect your rights ... whether you are buying or selling ... in this very competitive market.

L.B. Andersen & Co., Inc. has been doing business since 1921 and during those years the very personal interests of each and every client has been carefully looked after. No matter who that person was ... a single homeowner or some large and fearless corporation ... each was protected by the careful scrutiny of L.B. Andersen & Co., Inc. to make sure that each deal was satisfactory and that both buyer and seller was happy.

Compliments of



The Doctor's Center

Wheeling, Illinois

R. E. HOLT REALTY CO.

403 E. Dundee Rd., Wheeling
537-6494

Wheeling Office Established 1962

We Offer Service In.

- Residential Homes
- Acreage
- Rentals
- Commerical Business
- Industrial
Property
Management
- Appraisals



PROPERTY MANAGEMENT DIVISION

Our Property Management Division can offer you our experience in the Northern section of Chicago and in the North and Northwestern sections of the State of Illinois.

NATIONWIDE EXPOSURE --

Our company offers you Nationwide Exposure for the sale or purchase of Homes or Businesses. We are a Franchised member of the American Institute Marketing Service. If your home is listed with us it will also be listed with 2500 Real Estate Brokers throughout the United States.

We just got unpacked in time
to invite you to our pre-preview
August 19 through 24



Come have a look at your totally new
Chevrolet showcase in Wheeling . . . that's us
Yarnall-Todd Chevrolet, Inc.

We're looking forward to pampering you real good and we promise that everything you see will be exciting. Even our award winning service department. It's a real eye-opener!

All our people live in the thriving area of which Wheeling is the hub . . . an area from Winnetka to Algonquin and from Libertyville to Park Ridge, including Buffalo Grove and Wheeling itself.

Our president, Tom Todd, has served as chairman of the Chevrolet National Dealers' Planning Committee and is frequently invited to address Chevrolet dealer groups throughout the country.

The chairman of our board, Frank Yarnall, is a 50 year veteran of the automobile business and as an automobile dealer he has served as president of the Chicago Better Business Bureau.

YARNALL-TODD CHEVROLET, INC.

The New Chevrolet Showcase in Wheeling

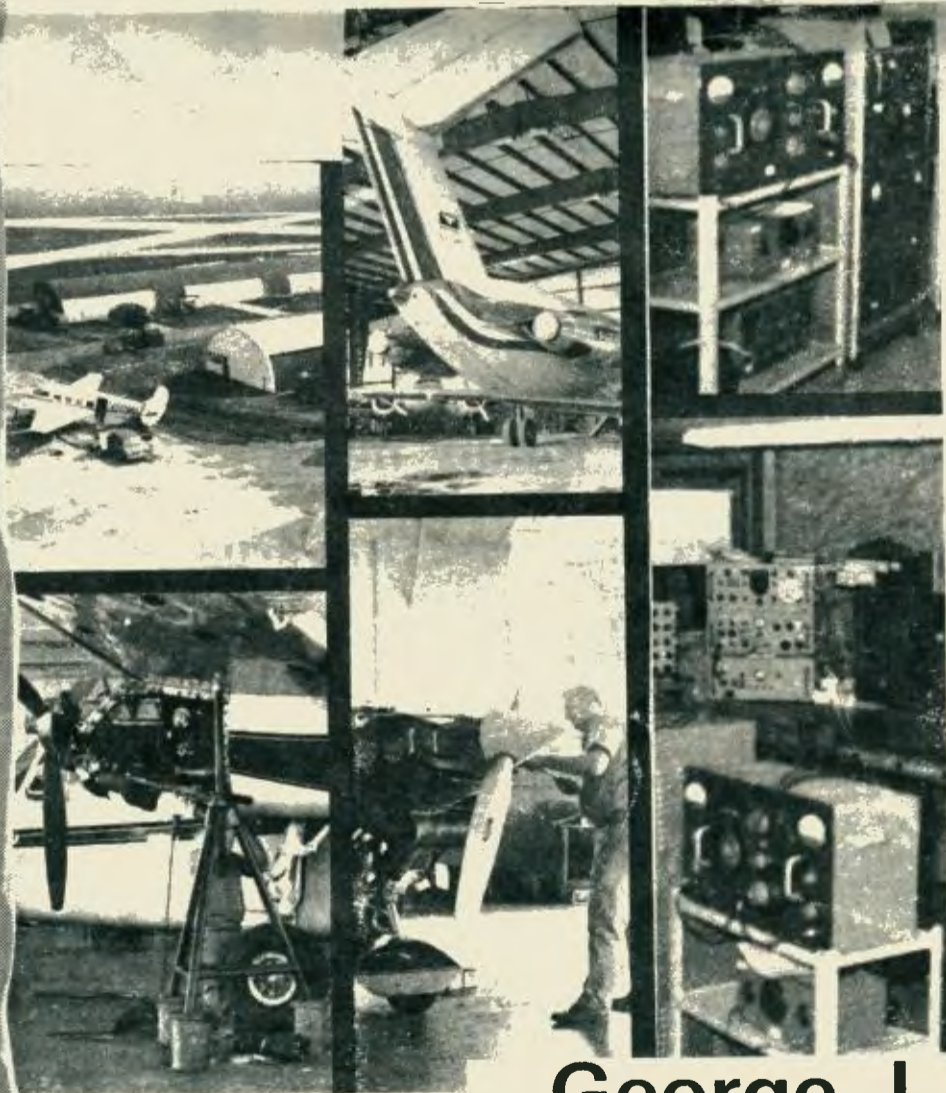
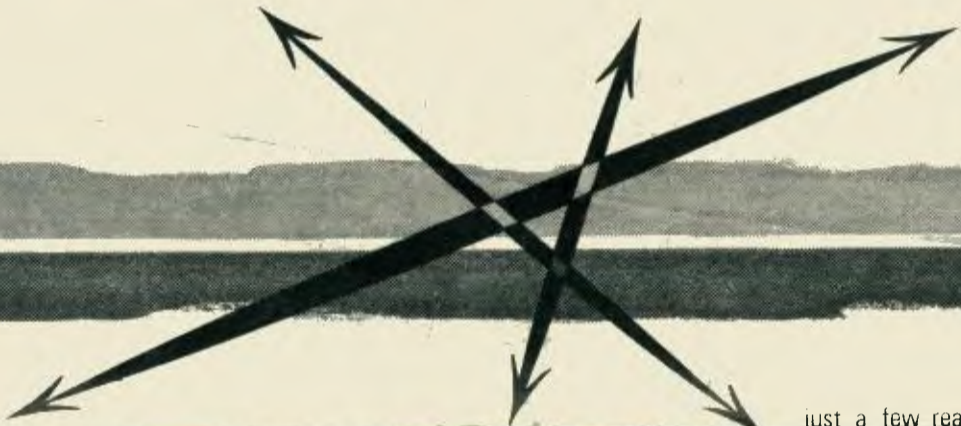
"ON DUNDEE AT 83" • PHONE 537-7000

**GROWING
WITH
WHEELING**

A COMMUNITY ASSET



SERVICE TO THE COMMUNITY IS OUR BUSINESS



just a few reasons why over 250,000 landings and takeoffs were handled at PALWAUKEE AIRPORT during 1967 and an increase is expected in 1968.

- NO TRAFFIC DELAYS
- FAA New Tower Control
- FAA approved instrument approach with approach and runway identified lights.
- Convenient tollways and expressways to any Chicago metropolitan area location.
- 24 Hour service.
- FAA approved avionics department complete with sales and service.
- FAA approved aircraft and engine maintenance that operates 20 hours a day.
- Catering service and a 100 unit motel with meeting rooms.
- Car rentals - Airplane Rentals, Helicopter Service.

just a few of the many ways that PALWAUKEE AIRPORT contributes to the growth and the economic advantages of our area.

- a modern airport is a deciding factor to many corporations in determining the location of new manufacturing and distribution plants such as Skil Tool and others in our area.
- a modern airport is a large taxpayer and contributes greatly to the general economy of the area in many different ways.
- a modern airport enhances the value of surrounding property and is a necessity to any fast growing community in the U. S. today.
- a modern airport is an employer of many skilled persons and in many ways contributes to the economy of the community.
- a modern airport provides the recreational opportunities that modern America will be demanding more and more in the future.

George J. Priester

*Aviation
Service*

SOUTH MILWAUKEE AVE., WHEELING, ILLINOIS 60090
Area Code 312 / LE 7-1200